

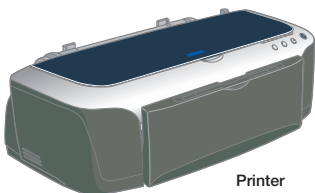
# Start Here



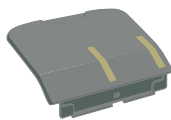
## 1

### Unpack

1 Remove everything from the box.



Printer



Paper support



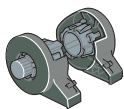
Ink cartridges



Cleaning pad



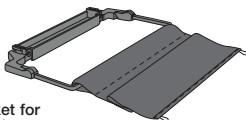
Cleaning sheets



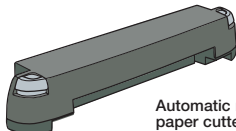
Roll paper holders



Power cord

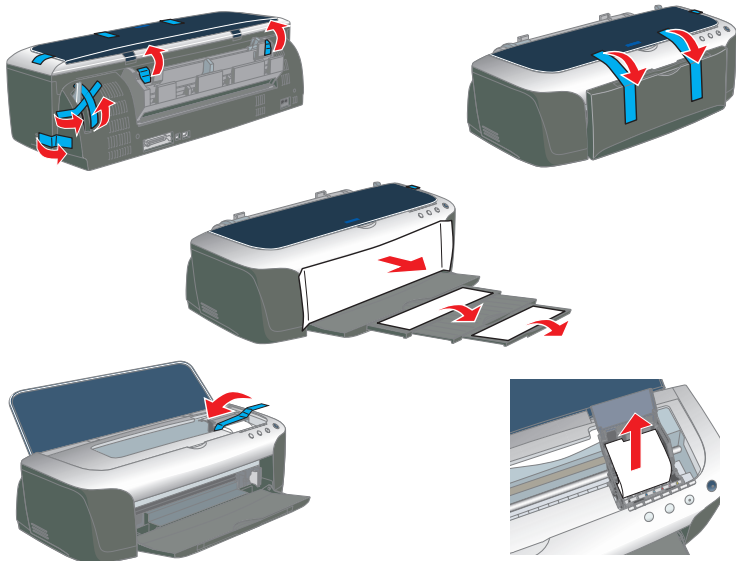


Basket for cut photos



Automatic roll paper cutter

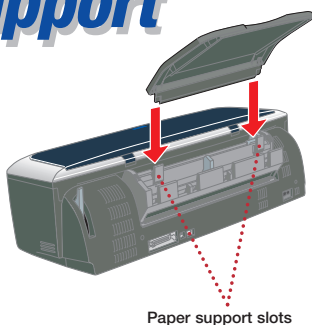
- 2** Remove all the blue tape and packing materials inside and around the printer.



## 2 Put On the Paper Support

Insert the paper support into its slots behind the sheet feeder.

(To install the roll paper holders, and automatic roll paper cutter and basket, see your *Printer Basics* book.)



Paper support slots

## 3 Connect the Printer

Printer connection cables are not included with your printer. You need **only one** of the following cables:

- USB cable, or
- Parallel cable (PC only), or
- IEEE-1394 or FireWire™ cable.

### USB Cable Users

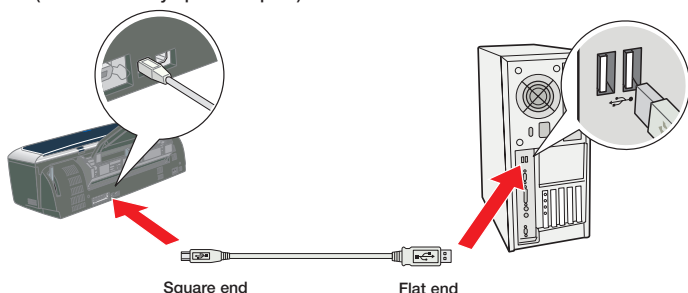


- 1** Shut down your computer. In Windows®, click **Start** and select your **Shut Down** or **Turn Off** option.

Leave your computer turned off until section 7.

- 2** Plug the square end of the cable into your printer's USB port until it stops.

- 3** Plug the flat end of the cable into your computer's USB port until it stops. (You can use any open USB port.)

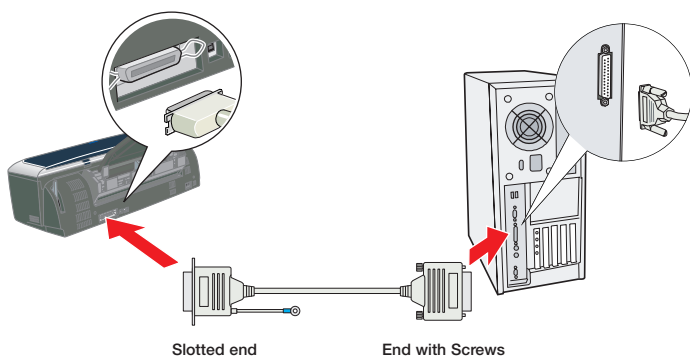


- 4** Now plug in and turn on your printer, as described in section 4.

## Parallel Cable Users (PC only)



- 1** Shut down your computer. Click **Start** and select your **Shut Down** or **Turn Off** option.  
Leave your computer turned off until section 7.
- 2** Plug the end of the cable with the slotted connector into your printer's parallel port, then secure it with the wire clips.
- 3** Plug the end of the cable with the screws on the side into your computer's parallel port and secure it.

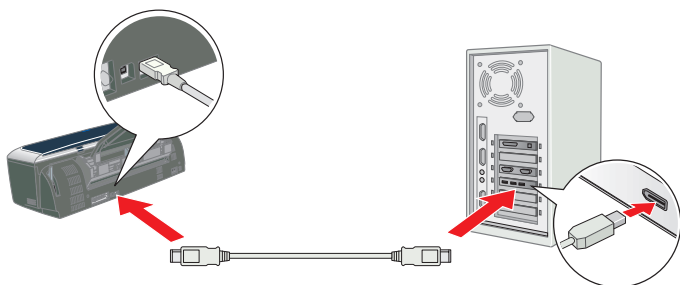


- 4** Now plug in and turn on your printer, as described in section 4.

## IEEE-1394 or FireWire Cable Users




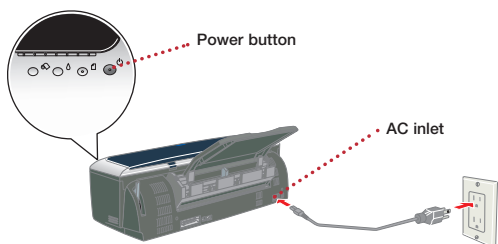
- 1** Shut down your computer. In Windows, click **Start** and select your **Shut Down** or **Turn Off** option.  
Leave your computer turned off until section 7.
- 2** Plug one end of the cable into the printer's IEEE1394 port.
- 3** Plug the other end of the cable into your computer's IEEE-1394 port.



- 4** Now plug in and turn on your printer, as described in section 4.

# 4 Turn On the Printer

- 1** Connect the power cord that came with your printer to the printer's AC inlet.
- 2** Plug the other end of the power cord into a grounded electrical outlet.
- 3** Press and release the  power button to turn it on.

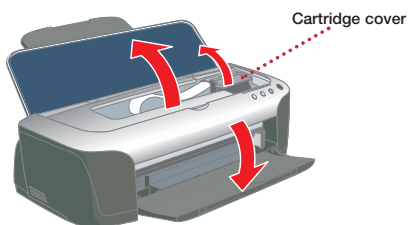


**CAUTION:** Never use an external switch, such as a wall switch or power strip switch, to turn the printer on or off.

# 5

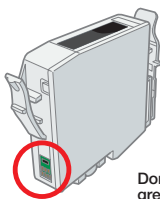
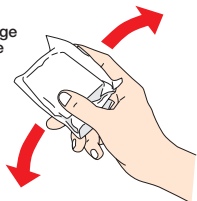
## Install Ink Cartridges

- 1 Open the output tray, the printer cover, and the cartridge cover.



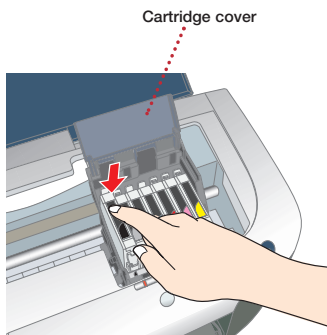
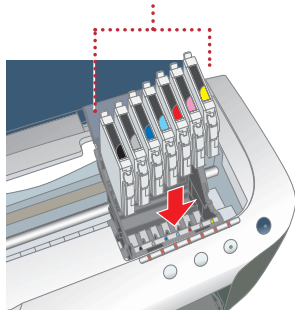
- 2 Shake each unopened cartridge up and down 4 or 5 times. Then remove them from their packages. (Don't shake them after removing the packaging.)

Shake cartridge in its package



- 3 Slide each cartridge into its slot with the green circuit board facing the back. Then press each one down until it clicks into place.

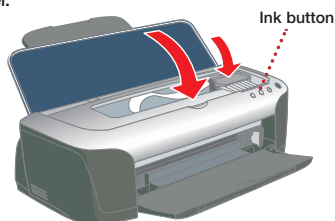
Photo Black, Light Black, Cyan, Light Cyan, Magenta, Light Magenta, Yellow



- 4 Close the cartridge cover and printer cover.

- 5 Press the  $\Delta$  ink button.

The green  $\circ$  power and red  $\Delta$  ink lights flash as your printer charges ink for about 1½ minutes.

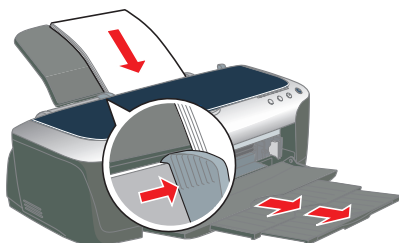


**CAUTION:** Don't turn off the printer or interrupt charging, or you'll waste ink. If the  $\circ$  power and  $\Delta$  ink lights don't turn off after 5 minutes, and the printer isn't making any noise, you can turn it off.

# 6

## Load Paper

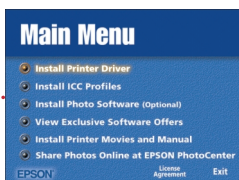
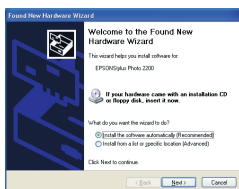
- 1 Slide the left edge guide to the width of your paper as marked on the paper support.
- 2 Fan your paper and place it in the printer against the right side of the sheet feeder.
- 3 Slide the left edge guide to fit lightly against the paper. Make sure the paper lies beneath the arrow inside the left edge guide.
- 4 Pull out the output tray extensions.



# 7 Install Software

## Windows

- 1 Turn on your computer.
- 2 Wait until you see a New Hardware screen like this, ..... then click **Cancel**. (On XP, you see smaller windows first; ignore them.)
- 3 Put the EPSON® CD-ROM in your CD-ROM or DVD drive. If you see other Windows screens, close or cancel them.
- 4 Read and agree to the license agreement to continue with installation.
- 5 Click **Install Printer Driver** and follow the on-screen ..... instructions.
- 6 With Windows® 2000, whenever you see the Digital Signature Not Found screen, click **Yes** to continue.




**NOTE:** If you see a screen about turning on the printer, make sure the printer is connected and wait for your computer to detect the printer port.

- 7 At the end, click **OK**, then register your printer with EPSON as instructed.

Now install your optional programs; see section 8.

## Macintosh

- 1 Turn on your Macintosh®.
- 2 Put the EPSON CD-ROM in your CD-ROM or DVD drive.
- 3 Select the EPSON CD-ROM icon on your desktop, if necessary. Then select the  EPSON Installer icon in the window that opens.
- 4 Read and agree to the license agreement to continue with installation.
- 5 Click **Install Printer Driver** and follow the on-screen ..... instructions to install your driver and restart your Macintosh. (You may need to enter your administrator password.)
- 6 After your Macintosh restarts, register your printer with EPSON as instructed (Mac® OS 8.6 to 9.x only).
- 7 Select your printer as described below.



## Mac OS X 10.x:

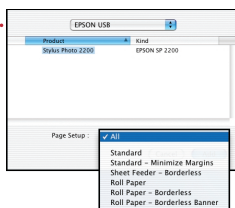
Open the OS X **Applications** folder, then open the **Utilities** folder and select **Print Center**.

If **Stylus Photo 2200** appears in the Printer List, select it and click **Add**.

If **Stylus Photo 2200** doesn't appear, make sure your printer is turned on and connected. Then click **Add**.

Select these options on the next screen: .....

- **EPSON USB** or **EPSON FireWire** at the top of the screen
- **Stylus Photo 2200** below



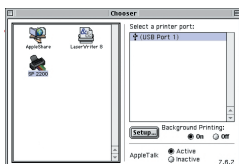
Open the **Page Setup** menu at the bottom of the screen and select **All**. Then click **Add**. Your additional printing features appear in Print Center.

Close Print Center and install your optional programs, as described in section 8.

## Mac OS 8.6 to 9.x:

Open the **Chooser**, then select these options: .....

- **SP 2200**
- Your **USB** or **FireWire** port
- **Background printing** (on or off)



Then close the Chooser and install your optional programs, as described in section 8.

# 8

## Install Optional Programs

**1** Close any open windows on your screen until you see the Main Menu. (Or select  EPSON or EPSON Installer in your EPSON CD-ROM window.)



**2** Windows only: Select **Install ICC Profiles**, then select the **Install** button on the next screen to install ICC profiles on your computer. (Macintosh ICC profiles are installed with the printer driver.)

**3** Select **Install Photo Software**. Select the software you want to install and follow the on-screen instructions.

**NOTE:** If you see a message about installing QuickTime®, click **Yes** and follow the on-screen instructions. You don't need a registration number. At the end of the Film Factory™ installation, deselect the option to launch the program, if necessary.

If you're asked where to install the P.I.M. II plug-in during installation, select your Photoshop® plug-in import/export folder.

**4** Select **View Exclusive Software Offers**. Select the software offer or demo you want to view or install and follow the on-screen instructions.

**5** Select **Install Printer Movies and Manual**, then follow the on-screen instructions to install the EPSON Printer Information Center (EPIC) on your desktop.

**NOTE for Mac OS 8.6 to 9.x users:** Make sure you've recently updated your OS using the Mac OS Updater tool before installing the EPSON Printer Information Center on your system.

**6** Select **Share Photos Online at EPSON PhotoCenter**,<sup>SM</sup> then follow the on-screen instructions to place a link to the web site on your desktop.

**7** At the Main Menu, click **Exit** then remove the CD-ROM.

**8** Mac OS X 10.x users: Restart your Macintosh in OS 9, then repeat the steps in sections 7 and 8 to install the Mac OS 9 printer driver and optional software for your Macintosh Classic applications.

# 9

## Print

Now you're ready to print. For instructions, use these resources:

- Your *Printer Basics* book

Learn about loading paper, printing, maintaining your printer, solving problems, and contacting EPSON.



-  EPSON Printer Information Center on your desktop

Click **Print Show** to view helpful animations that show you how to load roll paper and perform other tasks.

Click **Reference Guide** to view additional information about your printer.

